



"Quick Links"

www.klausunion.com



Klaus Union, Inc.
Houston - Texas
Phone: (281) 999-1182
Fax: (281) 999-1185
e-mail: applications@klausunion.com

Sealless Magnetic Drive Pumps

100 % Emission Free – by Design !

By eliminating the dynamic shaft seal, Klaus Union's sealless magnetic drive pumps operate **100 % Emission Free**. A synchronous magnetic coupling transmits power from the driving motor shaft on the atmospheric side through a static isolation shell to the driven magnet carrier inside the pump. A set of product lubricated journal bearings – typically made out of silicon carbide – supports the rotating arrangement of internal shaft, impeller and driven magnet carrier.



When Leakage is no Option – Trust the Specialist !

When you are dealing with toxic, aggressive, explosive or heat transfer fluid applications - partner up with the Expert. Over 60,000 installed sealless magnetic drive pumps worldwide and over 60 years of experience make Klaus Union your first choice when leakage is not an option.



Most comprehensive Sealless Application Coverage !

Klaus Union's sealless mag drive pumps cover flow rates up to **15,000 GPM**, delivery heads up to **3,000 ft TDH**, system pressure up to **5,800 psi**, driving power up to **700 HP** and temperatures up to **840 °F** without cooling. Available materials of construction include 316SS, Hastelloy-C & B, Alloy-20, Titanium and Zirconium.

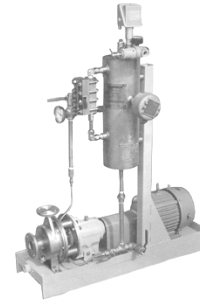


The Sealless Advantage:

The growing popularity of Klaus Union's sealless magnetic drive pumps is driven by numerous advantages of our modular concept design.

High Reliability - Low Cost of Ownership

By eliminating the mechanical shaft seal, and the necessary pressurized sealing fluid arrangement to achieve zero leakage to the atmosphere, your Klaus Union mag drive pump will save you money – for many years to come.



Mechanical Shaft Seal

Merely two ball bearings, supporting the outer magnet carrier in the drive frame, require simple maintenance. Our popular close-coupled model **SLM-AVB** eliminates even these two ball bearings, literally making the pump maintenance-free.



Sealless Concept

No Emission Inspection & Reporting

Since our sealless mag drive pumps operate 100 % Emission Free, they have been excluded from the fugitive monitoring requirements of the *Clean Air Act* as it applies to pumps handling volatile and hazardous air pollutants.

Safety First with Real Dual Containment

Our optional **double wall isolation shell** provides real dual containment and peace of mind for extremely critical and lethal applications.

Vacuum-tight

Klaus Union's sealless mag drive pumps are ideal for vacuum services or for fluids that react in contact with the atmosphere.

Maintenance-friendly design

The user-friendly design allows to maintain our equipment in the field. No sensitive o-rings, no special tools, or complicated alignment procedures are required.

