



"Quick Links"

www.klausunion.com



Klaus Union, Inc.
Houston - Texas
Phone: (281) 999-1182
Fax: (281) 999-1185
e-mail: applications@klausunion.com

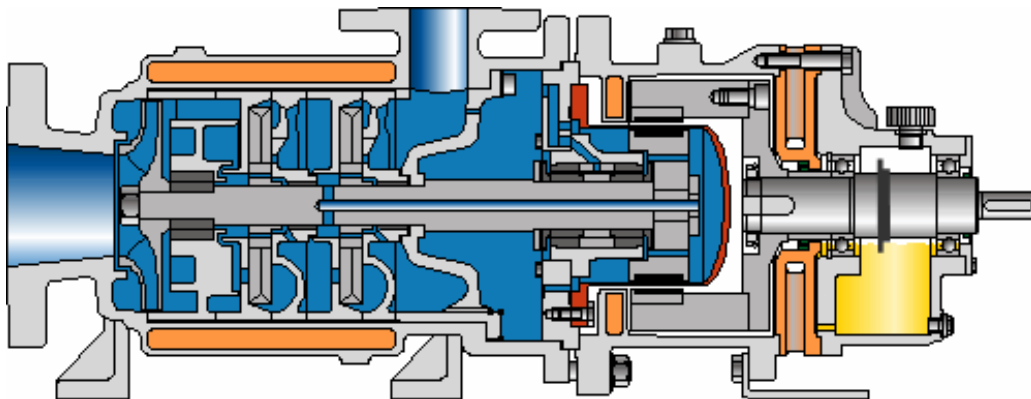
Magnetic Drive Side Channel Pumps

100 % Emission Free – by Design !

As a member of Klaus Union's sealless magnetic drive pump family our **Side Channel Pump SLM SVO** eliminates the mechanical shaft seal to operate **100 % Emission Free**.

A synchronous magnetic coupling transmits power from the driving motor shaft on the atmospheric side through a static isolation shell to the driven magnet carrier inside the pump. A set of product lubricated journal bearings – typically made out of silicon carbide – supports the rotating arrangement of internal shaft, impellers and driven magnet carrier.

The side channel hydraulic belongs to the family of regenerative turbine pumps. It's self priming characteristic and the very low NPSH required of only 1.5 feet make this pump ideal for loading and unloading applications. The first centrifugal stage is followed by up to 8 radial vane impeller stages producing a maximum differential liquid head of up to 1,400 ft.



The encapsulated barrel design allows jacketing the pump case for heating or cooling purposes and avoids the use of o-rings to eliminate any potential to leak.

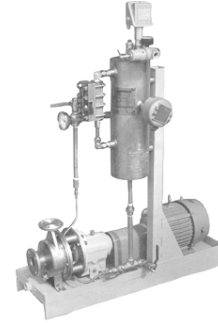
The Sealless Advantage:

The growing popularity of Klaus Union's sealless magnetic drive pumps is driven by numerous advantages of our modular concept design.

High Reliability - Low Cost of Ownership

By eliminating the mechanical shaft seal, and the necessary pressurized sealing fluid arrangement to achieve zero leakage to the atmosphere, your Klaus Union mag drive pump will save you money – for many years to come.

Merely two ball bearings, supporting the outer magnet carrier in the drive frame, require simple maintenance. Our popular close-coupled model **SLM-AVB** eliminates even these two ball bearings, literally making the pump maintenance-free.



Mechanical Shaft Seal



Sealless Concept

No Emission Inspection & Reporting

Since our sealless mag drive pumps operate 100 % Emission Free, they have been excluded from the fugitive monitoring requirements of the *Clean Air Act* as it applies to pumps handling volatile and hazardous air pollutants.

Safety First with Real Dual Containment

Our optional **double wall isolation shell** provides real dual containment and peace of mind for extremely critical and lethal applications.

Vacuum-tight

Klaus Union's sealless mag drive pumps are ideal for vacuum services or for fluids that react in contact with the atmosphere.

Maintenance-friendly design

The user-friendly design allows to maintain our equipment in the field. No sensitive o-rings, no special tools, or complicated alignment procedures are required.

